

Laboratory Dry Sterilizer

Natural convection

SI401/601

Operating temp. range

Room temp. +5~260°C

Temp. distribution accuracy

20°C(at 260°C)

Internal capacity

77L (SI401)

159L (SI601)

Low cost and programmable

■ Operation and function

- Improved temperature controller with better operability
- Digital setting by main menu and ▲/▼ keys for fixed temperature, program, quick auto stop, auto stop and auto start operations
- Standard equipped with calibration off-set, lock function, power failure recovery mode
- Programmable with maximum 30 steps, 6 patterns, repeat operation

■ Safety features

- Standard equipped with self diagnostic functions, earth leakage breaker and overheat prevention device



77L
SI401

(Stand optional)

■ Specifications

Model	SI401	SI601
Circulation method	Natural convection	
Operating temp. range*	Room temp. +5~260°C	
Temp. adjustment accuracy	2°C (at 260°C)	
Temp. distribution accuracy	20°C (at 260°C)	
Max. temp. reaching time	~70min.	
Interior / Exterior	Stainless steel / Chrome free electrogalvanized carbon steel sheet coated with chemical-proof baked-on finish	
Heater	Iron chromium wire heater 1.2kW	1.36kW
Sensor	K type Thermocouple	
Exhaust port	I.D.30mm x 2 (top)	
Temp. controller	PID control	
Temp. display	Measured temp. display: green 4 digit LED digital display Setting temp. display: red 4 digit LED digital display	
Timer	1 min~99hr 59 min and 100~999 hrs 30 min. (with timer wait function)	
Operation function	Fixed temperature, quick auto stop, auto stop, auto start, program (6 pattern: 30 steps x 1, 15 steps x 2, 10 steps x 3, pattern repeat function)	
Additional function	Lock function, auto recovery after power failure, calibration off-set	
Safety device	Self diagnostic functions (temp. sensor failure, heater disconnection, SSR short circuit, memory error, internal communication error, measurement temperature error, automatic overheat prevention), overheat prevention device, earth leakage breaker	
Internal dimensions (WxDxH)	450 x 430 x 400mm	600 x 530 x 500mm
External dimensions (WxDxH)	550 x 540 x 777mm	700 x 640 x 877mm
Internal capacity	77L	159L
Shelf plate with standard load	~15 kg/pc.	
Shelf rest step number / pitch	10 steps / 30mm	13 steps / 30mm
Power source (50/60Hz)	AC115V 10.6A (with plug)	AC115V 11.8A (with plug)
Weight	~42 kg	~59 kg
Shelf plate material	Stainless punching metal	
Shelf plate / bracket	2pcs./4pcs. (bottom one is screwed)	

* Conditions: temperature 23°C±5°C, humidity 65%rh±20% (no load)



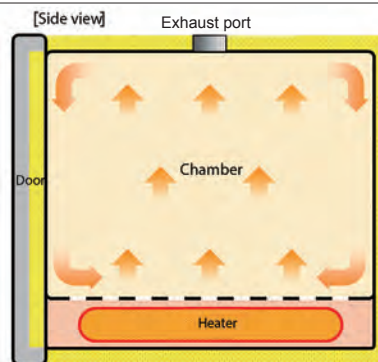
159L
SI601

(Stand optional)

Control Panel



Method



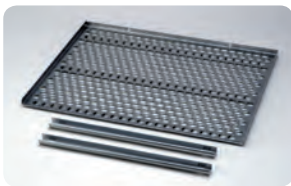
Interior



Optional items

Description	Product code
Stand ONS60	212802
Stacking clamp ODK82 (for SI401)	212804
Stacking clamp ODK84 (for SI601)	212805
Shelf and bracket set for SI401	212095
Shelf and bracket set for SI601	212266
Seismic mat	296902
External communication function*	281240
External communication adapter*	281241
Temperature output terminal*	281242
External alarm terminal*	281243
Time-up output terminal*	281244
Independent overheat prevention device*	281245

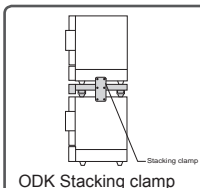
* Please specify when ordering main unit.



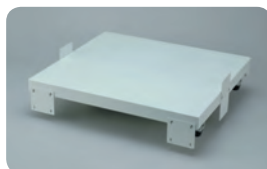
Shelf and bracket set



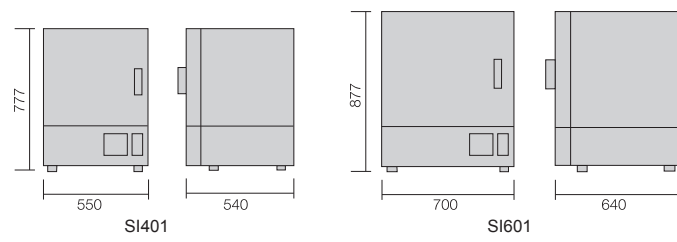
Seismic mat



ODK Stacking clamp



Dimensions (mm)



⚠ Attention

- Never use in flammable or explosive gas atmosphere.
- Never use explosive or flammable material.

- Caution: High temperature components.